

Visor Kit Installation Instructions

1. Slide the visor frame into the visor cover until the binding of the cover is tight against the front edge of the frame. Center the cover over the frame. Apply contact cement to the two front corners of the inner face of the visor frame and to the first inch of the inner front edge of the frame. (1, fig 1), and apply cement to the corresponding areas of the inside face of the inner part of the visor cover. Let the cement dry until it becomes tacky before pressing the cover down against the frame. Note: to keep the cover separated from the visor frame until you are ready to press the cover down, insert pieces of cardboard on edges between the frame and the cover (fig 2). Press the corners down first, and then do the rest of the front edge. Keep the binding tight against the edge of the frame at all times when installing the visor cover.

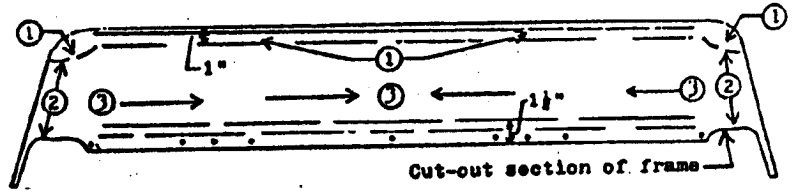


Fig. 1 - View of Inner Face of Visor Frame

2. Cement the two sides from the bottom edge of the frame up to where the cut out section of the frame begins (2, fig 1). Again, keep cover separated from the frame with pieces of cardboard until the cement is tacky and you are ready to stick the cover down.

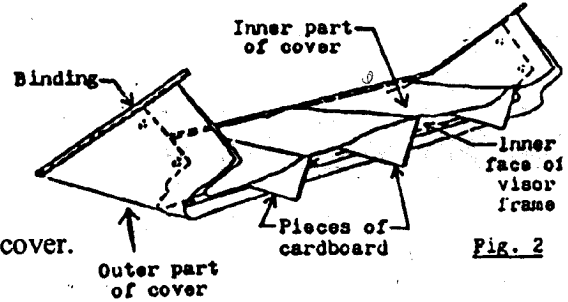


Fig. 2

3. Apply cement to the last 1 1/2" and all across the rear edge of the frame (3, fig 1), to the corresponding area of the visor cover. After cement becomes tacky, pull back on the cover and press it down along the rear edge of the frame. Press first at sides then work in towards the center.

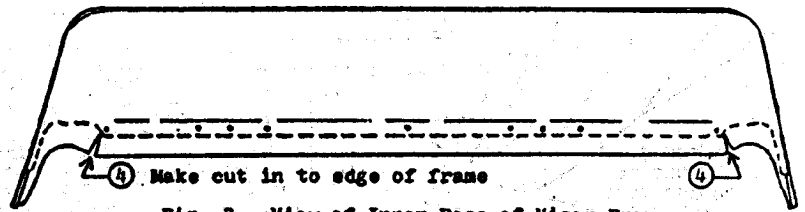


Fig. 3 - View of Inner Face of Visor Frame

4. Fold the outer part of the cover back about 2" (see Fig 4). Just beyond the ends of the straight part of the rear edge of the frame, where the cutout sections at the rear sides begin, make cuts in the inner part of the cover, (4, Fig. 3). Cut into the edge of the frame. For all models except the: 1928-29 Leatherback Fordor (60-A and 60-B), trim off the inner part of the cover at the edge of the frame all along the cutout section of the frame and down the rear edge of the side of the frame to the binding. Do NOT cut the binding. Trim the fabric of the inner part of the cover as close to the edge of the binding as you can without cutting the binding (see fig 4 and 5). For these models, the outer part of the visor cover will be brought around the rear edge of the frame and cemented over the inner part of the cover. For the 1928-29 Leatherback Fordor, the opposite is true. The outer part of the cover will be trimmed away along the rear side edges, and the inner part of the cover will be brought around and cemented over the outer part, (see fig. 8).

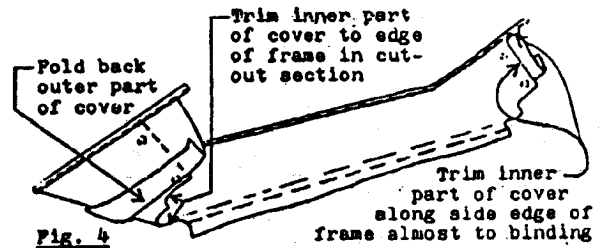


Fig. 4

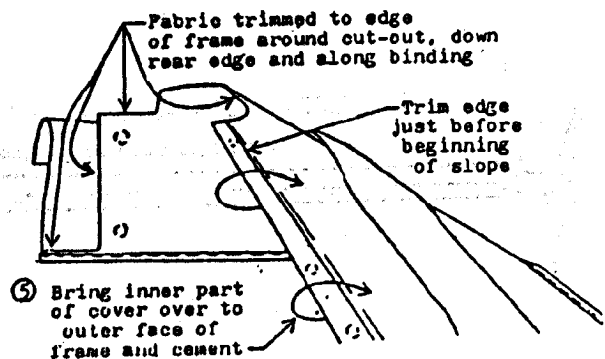
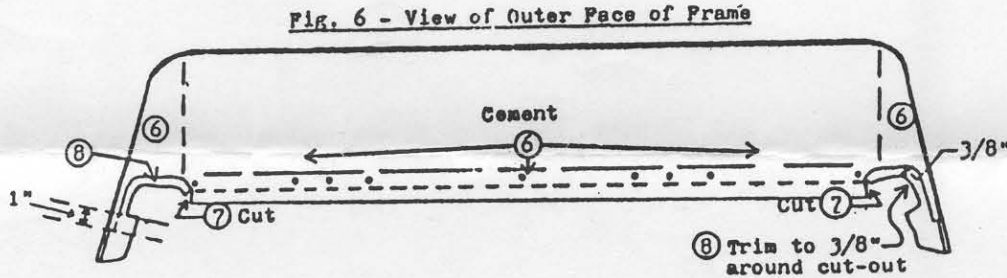


Fig. 5

Visor Kit Installation Instructions

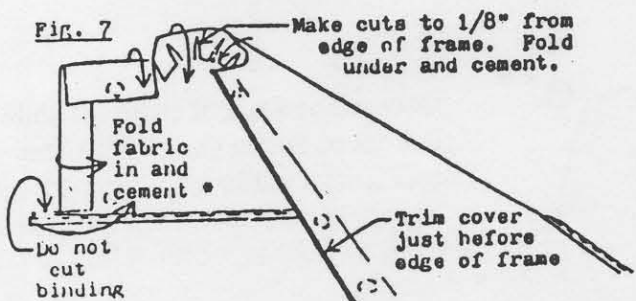
5. Cement the remaining fabric of the inner part of the cover. Bring the rear edge of the fabric up and cement it to the outer face of the frame about 1" along the rear edge (5, Fig 5). Trim the fabric off along the flat upper rear edge of the frame, just before where the frame begins to slope down.



6. With the out part of the cover rolled back, apply cement to the sides and across the outer face of the frame, and to the corresponding areas of the cover (6, Fig. 6). Use the pieces of cardboard again to keep the cover away from the frame until the cement is ready.

7. Make a cut at the ends of the straight part of the rear edge of the frame at the same point as you did for the inner part of the cover in Step 4(7, Fig. 6). Trim the excess fabric off just before the edge of the frame all along between the cuts (fig. 7).

8. Now, from that cut around to a point one inch in from the side edge of the frame, trim the fabric around the cut out section of the frame down to 3/8 of an inch from the frame (8, fig. 6). Around these cutout areas of the frame, make a series of cuts down to within 1/8 of an inch of the frame. Fold the fabric in these areas down and cement it to the inside of the frame over the inner part of the cover (fig 7). Except for the 1928-29 Leatherbacks, fold the rear sides of the cover inward and cement them over the inner part of the cover. For Leatherbacks, fold the inner part of the cover outward and cement it over the outer part (fig 8). For all models, be sure you don't apply cement to the cover beyond the points that will be concealed by the upper body pillar of the car. Tuck the ends of the binding between the side of the visor and the body pillar when installing the covered visor onto the car.



• Except for 1928-29 Leatherback Fordors (See Fig. 8)

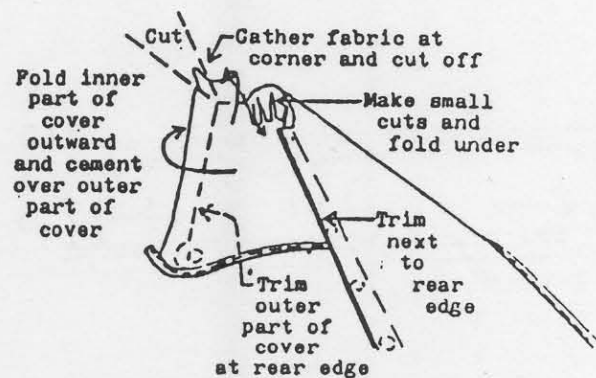


Fig. 8 - 1928-29 Leatherback Fordor